

RESIDENTS ASSOCIATION

Newsletter of Tattenham & Preston Residents



Spring 2021

www.tattenhamprestonresidents.org.uk

ANNUAL GENERAL MEETING

THE AGM OF THE ASSOCIATION WILL BE HELD VIRTUALLY ON
ZOOM

ON MONDAY 29 MARCH 2021 AT 7:00 PM

ALL RESIDENTS OF TATTENHAM CORNER & PRESTON WARD WELCOME

AGENDA

GUEST SPEAKER
DANIEL ELKELES, CHIEF EXECUTIVE, EPSOM ST HELIER HOSPITALS
PRESENTATION ON NEW HOSPITAL PROPOSALS
WITH QUESTIONS AND ANSWER SESSION
***** SEE PAGE 5 FOR SOME OF THE KEY ISSUES *****

Followed by formal business

1. Residents Association Chair's report
2. Approval of minutes from the last Annual General Meeting
3. Treasurer's report
4. Election of the R A Committee
The Chair, Kathryn Chappelle kjchappelle@hotmail.co.uk would be pleased to receive nominations (alternatively come as a guest, to see what is involved)
5. Adoption of the Association's County and Borough Council election candidates for the May election
6. Councillors reports: Jill Bray, Bob Harper and Nick Harrison, including question and answer session
7. Any other business

To participate we will need your email address. We will then give you the link to the zoom session. Please email kjchappelle@hotmail.co.uk if you want to join us, and say if you need help with the app. Please see the website for more details.

TATTENHAM CORNER & PRESTON RESIDENTS ASSOCIATION

The R A represents residents living in the Tattenham Corner & Preston Ward of Reigate and Banstead Borough Council. It is a non-party political organisation that aims to preserve and improve amenities in the area and to foster good local government by a close liaison with local authorities and other public bodies, including election of its own councillors.

Our local councillors work as a group with councillors sponsored by Nork Residents Association at the Borough Council, and with Residents Association and independent councillors across Surrey at the County Council.

Any resident wishing the R A to take up questions concerning local matters or interests should email or phone a Councillor or a Committee Member.

This edition of our newsletter is distributed to all households in the ward prior to our AGM. If you would like to join the Association, please contact the Chair – see last page.

FROM THE CHAIR

Dear Resident

After a year in lockdown we now have the beacon of hope that a semblance of our daily lives is now returning. It has been even the smallest acts of kindness that have carried us through. Many people have chosen to carry on and support the community and we owe them a debt of gratitude, from NHS staff, to teachers, delivery drivers, shopkeepers, community and local church groups.

We had to cancel our AGM in March 2020 and it was eventually held in December, using everyone's new best friend, "Zoom". It was well supported and proved to be an informative meeting with the councillors' reports alongside our guest speaker, Sergeant Vinny Wagjiani. Vinny is the new officer in charge of the Neighbourhood Team in the North of the Borough and he spoke with exuberance and intensity on how the area would be policed. Believing in intelligence led policing he wants to give his team more autonomy to deal with local incidents. Initial activities will deal with speeding, anti social behaviour, to prevent and reduce drug taking and the illegal use of NOS canisters.



Remembrance Commemorations

Remembrance Day services were pared down and in November committee members scaled ladders to put up large poppies on lampposts in some of the main thoroughfares in the ward; they seemed to be well received as people smiled and waved at us as they drove by. Our intention is to do the same this year. In our ward we do not have a war memorial so we put up two "silent soldiers", one outside the library, and the other by the Marbles Way shops and wreaths were laid at both. These are fixed pieces and will give those of us who wish to remember lost and injured ones from conflict a place to go to pay their respects.

In December the ladders came out again to take the poppies down and put the Christmas Banners up. It was not the Christmas anyone had hoped for but any little thing to lift spirits helped.

CIL (Community Infrastructure Levy)

The Community Infrastructure Levy (CIL) is a charge levied by local authorities on most new development in their area, including new homes, with the aim of supporting local infrastructure. To this end CIL has been used to fund road and pavement resurfacing, and additional parking bays in Chetwode Road, along with replacing a number of bus shelters, plus work on the commons.

Graffiti Wall Removed at Marbles Way Shops

The graffiti was a most unwelcome addition when it suddenly appeared. Many complaints were received and after sustained negotiations it has now been removed.

Phoenix – arising from the Ashes?

As part of the Preston Regeneration Scheme the youth facilities were key to provide a focus for social, leisure and community activity. The County Council no longer funds youth clubs, but after pressure from local councillors, the Phoenix Centre will be kept open for use by voluntary groups. The YMCA and MYTI are interested, but discussions have stalled. We are pushing for arrangements to be finalised so the Phoenix is open as we move out of lockdown.

County and Borough Elections

It has now been confirmed that the County and Borough Elections will be taking place on 6th May. This will affect 2 of our councillors, Nick Harrison as county councillor and Bob Harper as borough councillor. Voting stations will be open, but postal votes may be a preferred option for many. Application for postal and proxy votes can be done via the Reigate and Banstead website. For a postal vote apply no later than 5pm on Tuesday 20 April 2021 and for a proxy vote apply no later than 5pm on Tuesday 27 April 2021. If you attend the polling station in person please take your own pen or pencil to mark your ballot paper and masks will probably still be required.

Our New Mayor

Finally, but by no means least I am very pleased to announce that Cllr Jill Bray will be Mayor of Reigate and Banstead starting in May. Jill has served as a councillor for many years and is well known in the community for her outgoing personality, her can-do attitude and her commitment and dedication to our area. I know she is thrilled to have been given this accolade and is very much looking forward to starting her year as Mayor and we wish her well with her Mayoral duties.

Kathryn Chattelle

OUR NEW WEB SITE

Not long before Christmas we introduced a brand new web site. Since then we have been busy putting up many useful and interesting articles and news which we think are relevant to local residents. Many web sites contain old or outdated information. Every week we go through our web site to ensure the information is current and relevant. We regularly remove out of date material. We are always seeking to improve and enhance the content.

Would you like to know how much your house cost in 1934? This house from a local sales brochure is described as: "A distinctive period type house with two imposing reception rooms, large square shaped kitchen, three good sized bedrooms, bathroom and separate W.C." And all for the princely sum of £700. If you couldn't scrape that much together then the mortgage was 19 shillings (95p) per week. You can see this house and many more in the **Tattenham Corner Estate** page.

Getting more up to date on Planning: If you are looking to extend your house, or have concerns with a nearby development, the website tells you how to proceed.

Who does what? If you're not sure whether it's the County or Borough Council, we have a simple summary of who does what. We also have links to **report problems** – for example a pothole or other highways issue.



A DISTINCTIVE period type house with two imposing reception rooms, large square-shaped kitchen, three good sized bedrooms, bathroom and separate W.C. For this type of house we choose some of our best positions, and give ample room for garage, and generally a large garden at rear. It includes all the very latest fireplace suites, electric fires in two main bedrooms, a fully equipped kitchen and bathroom, and all the latest electrical fittings in aluminium. A better house at the price would be difficult to find. Crittall windows throughout.

£700
FREEHOLD

HALL	9' 3" wide	THIRD BEDROOM	9' 6" x 12'
LOUNGE	12' 0" x 12' 0" (ex bay)	BATHROOM	
DINING ROOM	13' 0" x 12' 0"	SEPARATE W.C.	
KITCHEN	8' 6" x 8' 6"	ARMS CUPBOARD	
FIRST BEDROOM	13' 0" x 12' 0"	LARGE GARDEN	
SECOND BEDROOM	12' 0" x 12' 0"	CRITTALL WINDOWS	

COMPLETE ELECTRICAL FITTINGS INCLUDING SHAVES & BUBBLES



We have picture galleries from the 1950's onwards. You can directly compare these with up to date Google Street views.

See Over the Years.



Local Links. We have a whole page full of local organisation website links you may find useful – official bodies such as the councils and the local NHS, and also churches and local voluntary groups for the countryside, for the young and old. If you would like us to link to your organisation, let us know.

We regularly receive updates from the **Police** and **Neighbourhood Watch**. Our **Borough and Council Councillors** provide up to date information on council affairs. They can also be contacted directly from the web site. See **Our Team/Councillors**.

So how do you access the website?

The new website address is <https://tattenhamprestonresidents.org.uk>

We know this is a bit of a typing mission so you can still use the old website address <http://tattenhamra.org.uk> which will redirect you to the new site. Or just use Google and type in **tattenham preston residents** - we should be top of the list. For the adventurous scan this QR code on your mobile.

For best viewing results we recommend a standard wide screen display.



Get future issues of this newsletter by email? Please send an email to Kathy at kjchattelle@hotmail.co.uk Or go to the web site and select menu item **Contact Us**

Subscriptions

On the website you will find our Statement of Accounts for 2020. We are, as always, grateful for our band of road stewards who deliver our newsletter to over 4,000 households. Normally they would have also collected subscription monies. With current restrictions we had to think differently and therefore asked residents to drop an envelope through the door of their local road steward or pay by electronic transfer. We thank all residents who have paid in this way to support the work of the RA.

**To make an electronic transfer please send £3 to:
sort code: 30-93-08. account number: 00218075**

Please put your post code and house number in the reference field.

Alternatively, to pay by paypal, then use tattpra@gmail.com



BEACON FRIENDS' ASSOCIATION (BFA)

'BRINGING HOME, SCHOOL AND OUR COMMUNITY TOGETHER'

We are delighted to have the opportunity to introduce the BFA to everyone in the Tattenham and Preston Ward. The BFA is the charitable arm of the The Beacon School but we are certainly not your traditional PTA. Fundraising is just one of the things we do.

Working with our Headteacher Keith Batchelor and his amazing team of staff, we see our place in the our community as fundamental to achieving our objectives below. The Beacon School at the heart of the community it serves and joining in with (or driving) community initiatives.

We have one simple aim '*To advance the education of our students*' and we do this in 2 ways:

1. By developing effective relationships between staff and parents and others associated with the school
2. By engaging in activities or providing facilities or equipment which support the school and enhance the education of students

97% of our families live locally. Many of you will have children or grandchildren at the school or might have been a student here yourself. Or live next door to our students.

Our community is therefore all of you!

The best way to find out what we are up to is to follow us on social media. If you are a local group we could join forces with then get in touch. Or maybe you just have some great ideas yourself that could involve the school, drop us a line:

TWITTER @FriendsBeacon

FACEBOOK @FriendsBeacon

INSTAGRAM beaconfriendsassociation

EMAIL bfa@thebeaconschool.co.uk

OUR EXCITING BFA COMMUNITY PROJECTS!

We thought we'd start off with a couple of things we are working on currently to tell you about.

Have you heard about our **Beacon Project**? To celebrate the history of the school and the nearby ancient Tumble Beacon (originally a Bronze Age bowl barrow that was used in the earliest defence of the country as a beacon lit to warn of hostile forces), we are erecting our very own beacon outside school. It will be lit (flickering LEDs not real flames!) on special occasions like our annual carol service and will be a meeting point for local history walks. Our very talented design students have carefully designed and made the flame basket in metal. Some of the events where we light the beacon will be open to the public and we hope you will join us at some point. in the future. What a wonderful way to welcome our community into the school.

Covid has taken a real toll on school life and students and parents have naturally been distanced from the school building. The lockdowns have forced a completely different remote approach to teaching and learning. School is of course never closed, as we stay open for children of key workers, vulnerable children as well as those without access to technology at home. The staff and students have done an amazing job in incredibly difficult times.

Our **Community Hub Project** aims to put back some of the things Covid has taken away not just from school but from us as a community. When it is safe to do so, we want to be back in school making a difference and putting the heart back into this vibrant community school. This project will turn an unloved, dingy room into an exciting community cafe and a hub for parents and staff but we have longer term plans to open this facility up to you in the community. The school is currently closed for much of the time out of school hours. We'd like to run sporting events, get the The BFA Community Choir off the ground, run cookery classes and be open for refreshments. Big plans that are exciting for you in the community but we do have to build it first!

Did you know you can support us in all sort of ways? Our BFA Fundraising Team **School Lottery**, for example, is also open to our local community. A local winner every week and a chance at the the big £25,000 pot as well as regular additional prizes. Have a go - good luck!

<https://www.yourschoollottery.co.uk/lottery/school/the-beacon-school>

Sustainability, recycling and litter picking. We already do litter picks ourselves and have seen the amazing work done by the Tadworth, Kingswood, Walton & Burgh Heath Litter Pickers (@cleanuptadworth) in the area. Plus the herculean efforts for recycling by Tadworth Terracycle (@TadworthTerracycle). Our aim is to work with community champions like these and task our Student Council and Sixth Form Leaders to get every student at The Beacon School involved in 'loving where they live', as well as a few recycling initiatives based at the school itself. Making our young people our eco inspiration! Some of these initiatives will be things you can join in with too. Follow us on social media to find out more.

WE NEED YOUR HELP

We all need a little help every now and then. Our parents, students and staff are magnificently supportive of the BFA and the work we do and help us where they can. But sometimes we need to reach out a bit wider. For example, we are currently looking for electrical help in getting the flickering LEDs right and installing the electrical supply to the beacon. We will likely need support to refurbish our community hub area (lots of trades!). Following us on social media will really help us - it is where we put our requests for help. And if you think you can help in any way with the 2 items above, please contact us.

INTRODUCING BANSTEAD COMMONS

If there's one thing COVID has shown us, it is the greater appreciation of the simpler things in life – Nature and the Great Outdoors. Living in Surrey we are spoilt with beautiful green spaces on our doorstep, but did you know that the Banstead Commons Conservators are responsible for the maintenance and upkeep of 1,350 acres of the spaces we enjoy?

Formed under a Parliamentary Act in 1893 Banstead Commons Conservators were tasked to protect Banstead Commons from illegal activities especially those of the Lord of the Manor, owner of the commons at the time. Whilst society and the landowner have changed over the 130 years, the role of the Conservators has remained the same; to protect the integrity of the Commons from external pressures.

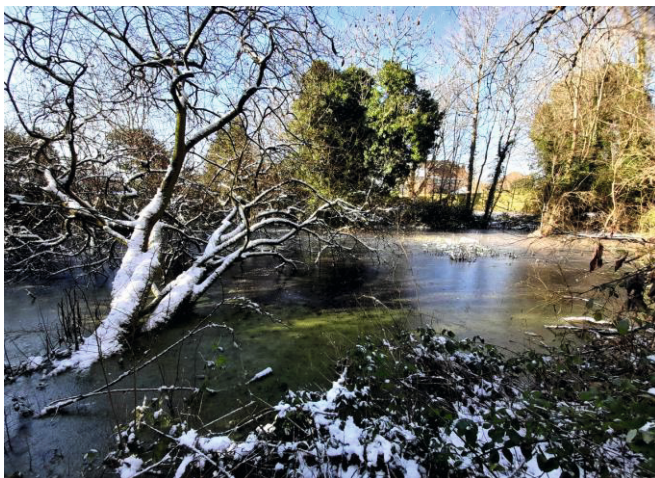
Banstead Commons consist of four main sites: Burgh Heath, Banstead Heath, Banstead Downs and Park Downs. Burgh Heath is your nearest site and is approximately 78 acres sandwiched between Preston and the Reigate Road. It is an important amenity for local people and home to some of our much-loved native wildlife.

The secondary woodland on the heath supports many different species of birds and a healthy population of the UK's most common bat, the Pipistrelle, which can often be seen feeding over the ponds during dusk and dawn. A network of ponds is home to various species of wildfowl, the Mallard, Moorhens and Coot. The majestic Grey Heron can often be seen on Burgh Heath pond poised and ready to strike on unsuspecting prey. Perhaps the most special resident on the heath is one of the UK's rarest amphibians, the Great Crested Newt.

As a local resident you may have noticed the Conservators have carried out clearance work to Lonesome Ponds and widened the woodland rides and glades this winter. As well as creating more sunlight on the pond and footpaths for visitors, the work is an essential part of woodland management and helps to enhance biodiversity and create a new source of nectar and pollen rich plants for invertebrates. Thanks to the Community Infrastructure Levy (CIL), this is the first stage of habitat enhancement due to take place on the Heath over the next two years which will improve the local area for the benefit of both people and wildlife.



A Great Crested Newt

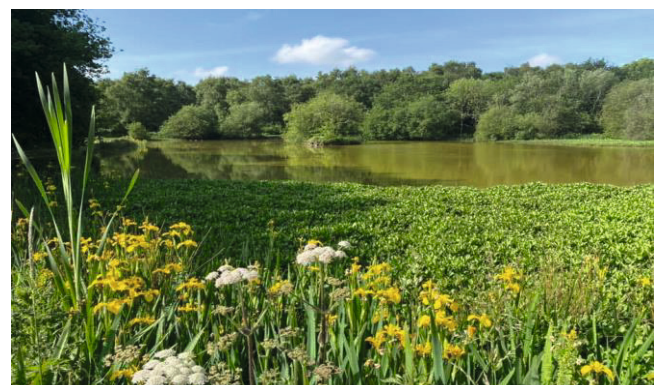


Lonesome Ponds, at the end of Chetwode Road

www.bansteadcommonsconservators.co.uk will give you further information on the Commons with details of the other three sites and the work of the Conservators. Or follow us on Facebook for regular updates and events.

Our precious green spaces help to provide peace and solace during unsettling times. With Spring here, why not take a slow stroll across Burgh Heath, absorb the changes and as the year progresses, observe how the plants grow and nature moves in to take full advantage of its new surroundings.

*Written by Lucy Shea,
Clerk to the Conservators*

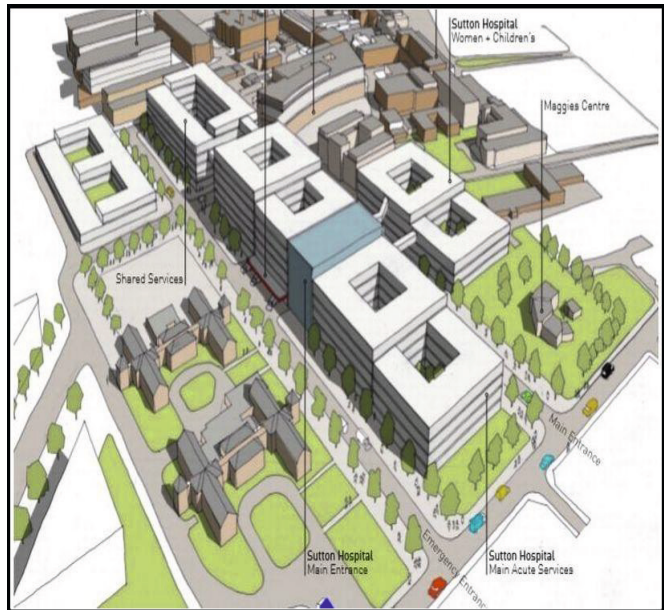


THE NEW HOSPITAL IN BELMONT

There have been mixed responses following confirmation of a new specialist emergency care hospital to serve Surrey and South West London.

The hospital in Belmont, South Sutton will cater for high needs critical care services such as A&E, maternity and children's services. Other health services, including a UTC (urgent treatment centre - a "cut-down" A&E) would remain in modernised buildings at Epsom and St Helier, and aims to open in 2025.

Supporters of the new unit say upgrades like these are essential for hospital buildings that are older than the NHS itself, while opponents say that crucial services like A&E would be taken away from the other hospitals as a result of the new unit.



Some Questions you might like to ask the NHS at our AGM

- Is the NHS decision to build at Sutton final? Is the money available and committed?
- What will remain in Epsom? What about the SWLEOC unit for hips and knees? What does "modernisation" in Epsom actually mean?
- What is the difference between an A&E and a UTC – urgent treatment centre?
- Will we still have to go to St Helier or St George's for some treatments?
- What new services will be available in Sutton – for example, cancer and renal?
- Will there be enough beds in the Sutton hospital? Will there be sufficient staff?
- Will there be parking for visitors to Sutton? Is there to be a Park and Ride?
- What about public transport?

+++++

CHAVECROFT



Raven have submitted a planning application to replace the outdated **Chavecroft** buildings with 23 homes, a mixture of houses and flats, all for social tenants. We are very concerned about the lack of parking on the site. For further details see our website.

A local charity is able to help by making small grants to any resident of the ward who is experiencing serious financial difficulties. If you have an urgent need, please apply by email to taylorbanstead@gmail.com in strict confidence.

wine & something.

At Wine&Something, we believe that good wine goes with anything. Delicious food. Old friends. Cosy nights in. The better the wine, the better those somethings.

Discover our exclusively sourced portfolio from some of the world's finest independent producers - all delivered straight to your door.

Based in Guildford, we're treating the lovely people of Tattenham with a discount on your first order with us.

TATTENHAM10

Apply code at checkout. Code cannot be used in conjunction with any other offer.

wineandsomething.com

desresblinds



**Customer service and quality
guaranteed by established family business
specialising in domestic blinds**

- rollers ■ venetians ■ verticals ■ velux
- pleated ■ conservatory roof
- awnings ■ shutters
- canopies ■ window films ■ curtains

Call us for an estimate or check out our website

tel/fax: 020 8651 3569

mobile: 07961 827 917

email: info@desresblinds.co.uk

web: www.desresblinds.co.uk

*for all your property
improvements and
maintenance....*

phone Flip !

flip bakker :

01737- 210241

07905-921-940

flip_bakker@hotmail.com

www.flipbakker.co.uk



plumbing - electrical - tiling - decorating - repairs

Advertise here!

Advertise here!

Advertise here!

Reach the residents of Tattenham & Preston - Competitive rates for local businesses

Contact Richard Mantle on 01737 - 357055

FROM SMALL JOBS TO RE-WIRES

**C
O
O
K
E
R

R
E
P
A
I
R
S**

**FULLY QUALIFIED
ELECTRICIAN**

***DON'T BE LEFT IN THE DARK
KEEP OUR NUMBER IN A
SAFE PLACE***

**J P ELECTRICAL
10 SOUTH DRIVE
BANSTEAD**

**Tel: 01737 - 355471
Mobile: 07870 - 265605
johnponsford30@btinternet.com**

GENERAL UPDATES

**F
A
U
L
T

F
I
N
D
I
N
G

&

R
E
P
A
I
R**

PET PALS



*Home delivery service
Small animal pet sitting
Customer loyalty cards*

*37 Tattenham Crescent
Epsom Downs KT18 5QJ
Tel: 01737 356888*

Premium Pet Foods at Sensible Prices

2020 - 2021 Committee

Chair Kathryn Chattelle, 11 Chetwode Drive, KT18 5TL
kjchattelle@hotmail.com

Vice Chair Martin Beard, 6 Sherborne Close, KT18 5UU Tel: 01737 216655

Hon. Treasurer Richard Mantle, 27 Shawley Way, KT18 5PB Tel: 01737 357055

Hon. Secretary Jill Bray, 27 Shawley Way, KT18 5PB Tel: 01737 357055

Bob Harper	68 Upland Way KT18 5ST	01737 211315	Asad Jamil	1 Oaks Way KT18 5PU	07544 939240
Nick Harrison	105 Tattenham Crescent KT18 5NY	01737 215405	John Smith	16 Merland Green KT20 5JB	07767 362088
Ian Mockford	1 Heathside Place barassie@gmail.com		Mark Sparling	51 Bidhams Crescent KT20 5HE	

Borough Councillors

Bob Harper 68 Upland Way e-mail: bob.harper@ntlworld.com T:01737 211315
Jill Bray 27 Shawley Way e-mail: cllr.bray@reigate-banstead.gov.uk T:01737 357055

County and Borough Councillor

Nick Harrison 105 Tattenham Crescent, e-mail: nicholas.harrison@surreycc.gov.uk T:01737 215405



Epsom Downs

A local Estate Agent with
local knowledge

We are **The Local Agent**

For a free valuation call us on:

01372 253 252

sales@thelocalagent.co.uk

The local agent
thelocalagent.co.uk

Traditional Spanish Tapas & Cuisine

“El Rincon”

Hours of Business

Monday-Saturday 7.00pm-10.30pm
Tuesday-Friday 12noon-2.30pm and
7.00pm-10.30pm

Full a la carte and Tapas Menu

Special Lunch Menu
Two courses £16.50 Three courses £18.50

Special Dinner Menu
Monday-Thursday
Two courses £19.50 Three courses £21.00
Friday-Saturday £28.50

Outside patio area

We are pleased to cater for parties

For Reservations Tel: 01737 373 647
16 Highview House, Tattenham Crescent,
Epsom Downs, KT18 5QB

Contact: info@elrincon-restaurant.co.uk
www.elrincon-restaurant.co.uk