

RESIDENTS ASSOCIATION

Newsletter of Tattenham & Preston Residents



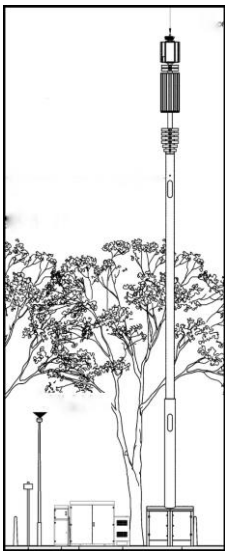
Summer 2021

www.tandpr.org.uk

RESIDENTS STOP NEW MAST BY THE SHOPS

You may have noticed that the Residents Association has been very busy around Tattenham Corner installing planters on pavements and renovating the flower bed by the station to build on the community feel of the area.

So we were very concerned and disappointed with a planning application from the Hutchison Three/3 Network to erect a 20-metre high mast on the central green area in the shopping parade. With 6 antenna and 2 transmission dishes, the mast would have towered above the trees. Also, a long line of unsightly cabinets next to the pavement.



It would have been out of character and altered the village green aspect at the heart of the community. The spot is a local amenity, a healthy green buffer between the shops and the road. It is a meeting area with seating and used for community events. It has houses and flats surrounding. We agree good electronic communications are essential and suggested alternative locations, such as by the recycling area or taking advantage of the new mast going up by Asda.

We were delighted when 140 residents wrote to the Council to oppose the mast in this location. The planners agreed and turned it down. **We wait to see what comes next and will keep you informed of future developments.**

Out of the four major mobile operators, Hutchinson Three/3 is the smallest operator with a 12% market share. Their coverage in our area is poor, hence their plan for a new mast on our village green. The other networks (EE, O2 and Vodafone) all appear to have adequate cover in our area. We wonder why and suggest the following to Three/3:

- See why the other operators are able to provide suitable coverage
- Take advantage of the new mast to be built by Asda
- Upgrade existing masts to improve capacity
- Share masts with other operators – this is government guidance.



T & P R e NEWS

THE NEWSLETTER FOR TATTENHAM & PRESTON RESIDENTS

REGISTER NOW FOR OUR NEW E NEWSLETTER

For many years, we have published this paper newsletter which is distributed throughout the Tattenham Corner and Preston Ward.

But in addition, we are launching a new monthly email newsletter that will provide news, views and articles covering a wide range of topics of local interest. This will provide our neighbours with a source of current and useful information about our community. It's free and you can subscribe now without obligation. Simply visit our website www.tandpr.org.uk and enter your email address. Or use your mobile phone to scan this QR code:



FROM THE CHAIR

Dear Resident

NHS Presentation at our Annual General Meeting

We have been successfully carrying on with zoom meetings, as we cautiously emerge from this past 18 months. At our virtual AGM in March, Daniel Elkeles, chief executive of Epsom and St Helier Hospital Trust, gave a comprehensive and enthusiastic presentation on the new hospital in Belmont, South Sutton. NHS approval has been given for the project which will cost about £430m and will provide six major acute services - emergency care including resuscitation, emergency surgery, critical care, acute medicine, inpatient paediatrics and maternity.

Under the plans, "about 85 per cent" of services will remain at Epsom and St Helier hospitals in refurbished buildings with both hospitals running 24 hours a day, 365 days a year with the focus on outpatients, day cases, rehabilitation and lower-level urgent care.

Work on the Sutton hospital is due to start in 2022 with the aim to open in 2025. For further details go to: <https://esthplanning.co.uk>

Website and E-Newsletter

Our Residents Association website www.tandpr.uk has been going from strength to strength with many more residents using the site. Through the website you can also sign up for alerts to latest news items. The latest development, to run in tandem with the website, is a monthly E-Newsletter for residents – see the front page.

Poppies

The Royal British Legion celebrated its 100th anniversary in May, with national and regional events held on 15th May. To commemorate this we, along with other RA's in the surrounding area, placed large poppies on lamp posts on the A217 and an impressive display in the Orchard, by All Saints Church in Banstead.

Tattenham Corner Planters – and not to forget Marbles Way

This is our latest ongoing scheme, to enhance the area by the shops and the library. Over the last bank holiday weekend we planted up crates with an array of perennials and bedding plants which were then placed on a stack of pallets. Thank you to our committee members who made the pallets look so good by sanding, varnishing and assembling them. It was hard work, but really enjoyable and residents told us how pleased they were to see these additions. Since then we have tidied the large plant pots and dug out the bed close to the station and replanted it. This project, as with all gardening, will be ongoing as we change the planting schemes in accordance with the seasons.



In addition to our work, we asked the Council to place their regular seasonal planters at the Marbles Way shops.

Tattenham Community Library

After a period of closure during the Covid lockdown, Tattenham library is now back in business. It has been open from 10 am to 1 pm on Tuesdays to Thursdays, until 5 pm on Friday and until 4 pm on Saturday. And now it is also opening on Mondays from 10 am to 1 pm.

When Covid restrictions are lifted further the library hopes to restart its Rhyme Time sessions for mothers and toddlers on Monday mornings. Further information can be obtained from the library.

Please also remember that our library is a community library run by volunteers. New volunteers are welcome to help run the library - just a few hours a week. Full training provided along with a cup of tea! To find out more pop into the library or phone during opening hours 01737 – 354148.

Verge Trees: The Council is providing new funding if you wish to have a tree in your verge – if you agree to water it for the first 2 years. Apply to Jill Bray – contact details on last page.

CIL (Community Infrastructure Levy)



This is the charge levied by local authorities on most new developments, with the aim of supporting local infrastructure. The major schemes in our area have been the **pavement repairs and parking bays** in Chetwode Road and the parking bays in Homefield Gardens, plus **new bus shelters**. There are snagging issues which need to be addressed.

The County Roads Officer has advised that the **surface of Chetwode Road** will require a specialist company to repair the tarmac laid over concrete to make a more permanent finish. This will not be actioned until the London Square development site is complete and the large lorries stop using the road. In the meantime pothole patching is required.

Posts and rails have been used in places to stop kerbs and grass verges being churned up by ad hoc vehicle parking – such as the junction of Preston Lane and Merland Rise.

In a number of areas including The Mound and the path from Chetwode Road to the Reigate Road **new litter bins** are being installed. Work has continued on the heath at the top of Chetwode Road by the Conservators to make the most of this green space. The **clearing of the area round Lonesome Pond** created a muddy mess earlier in the year but now the plants are coming through and the new bench is a pleasant place to sit and observe the changes. Work is taking place to the **entrance to the heath**, reprofiling the embankment, improving both its appearance and security.

The **pond on Marbles Way** is going to have a path and fence put around it to make it safer as the staging at the side has become dangerous. The **path from the Marbles Way shops** through the wooded area over to Fleetwood Close is to be improved.

Funding has been agreed to tidy up the **recycling area at Tattenham Corner**. The council operatives go to clean the site every day (except weekends) to try and control the situation. The site becomes overfull and is unsightly. We have suggested fencing to improve the situation, but council staff think hiding it away will just increase fly-tipping. Discussions continue.

Election Results

We are very grateful for the support shown to our councillors at the ballot box. There were two elections, and the results were as follows:

<u>Borough - Tattenham Corner & Preston</u>			<u>County – Nork & Tattenhams</u>		
Bob Harper	R A	1,226	Nick Harrison	R A	2,763
Conservative		501	Conservative		908
Labour		245	Labour		302
Green		93	Green		197
Lib Dem		70	Lib Dem		162

The number of R A councillors at the borough council is unchanged, but at the county it has almost doubled. R A/independent councillors are the largest group at both councils, after the Conservatives.

Subscriptions

We are grateful to our road stewards for delivering this newsletter. Last year because of Covid they could not knock on doors, requesting the annual £3 membership which helps cover the costs of the R A, and so we left envelopes. This proved successful, and we are repeating it again. Where we have a road steward, we are leaving an envelope with this newsletter, which we hope you will use. Please just drop it with the cash or cheque in the letterbox of your road steward.

Alternatively, **if we don't have a nearby road steward**, or if you prefer, you can make an electronic transfer from your bank:

**To make an electronic transfer please send £3 to:
sort code: 30-93-08 account number: 00218075
Please put your post code and house number in the reference field.**

**Alternatively, paypal to tattpra@gmail.com
– please use the option “payment to friends”.**

Kathryn Chattelle

NEWS FROM OUR LOCAL MAYOR

On 27th May it was my honour and privilege to be made Mayor of the Borough of Reigate and Banstead. During my year it is my aim to thank as many Volunteers, NHS Staff, and Key Workers who have gone that extra mile during the last 16 months.



My chosen charities are the YMCA East Surrey and Age Concern Banstead who have both done amazing work. I will also use my role to shine a light on the astounding efforts of the charitable sector in our Borough.

I will be keeping you posted with my activities on the Tattenham & Preston Residents website and our new E-Newsletter. You can also follow the Mayor on either facebook or twitter.

As a serviceman's daughter I was very happy that one of my early "in person" events was to raise the flag to the Armed Forces in Memorial Park in Redhill. It seemed a really fitting venue as there is a memorial stone there to 2nd Lieutenant Rupert Hallowes who was awarded a VC for his conspicuous Bravery and Devotion to duty during WW1. I am photographed here with the Banstead Royal British Legion's standard bearer Allan Parsons who came out of retirement for me for the day as we signalled our support and debt of gratitude for the men and women who make up her Majesty's Armed Forces community from serving troops and veterans and cadets, plus their families. A memorable event.



5th July was NHS, Social Care and Key Workers Day. To celebrate we invited some Doctors, Nurses and the people who had organised the mass vaccination Covid-19 roll out to the Reigate Castle grounds for drinks and nibbles. I was able, on behalf of the citizens of the Borough, to offer our grateful thanks for all they had done. The day was chosen as it was 73 years since the NHS had been founded and the Queen had also chosen that day to award the George Cross to

the NHS in recognition of "Acts of the Greatest Heroism or the most Courage in Circumstances of Extreme Danger". This year I'll visit the hospitals so that I can thank the Volunteers and staff personally.

This is the first ribbon that I've cut – I've since cut two more – for the new Surrey Choices hub on the Cromwell Estate in Redhill. The fabulous new hub will give the people they serve with better community-based support and access. Surrey Choices fundamental belief is that people with disabilities should have the same opportunities and access to the same places as everyone else.



I took cake to the Stripey Stork's first Volunteers lunch at their warehouse in Reigate. Stripey Stork collect donations of toys, clothes and other essential items for babies and children. After checking, they are re-homed to families in need, following a request from local professionals such as schools, health visitors, family centres etc. They are amazing – take a look at their web site www.stripeystork.org.uk

That's it for now – please contact the Mayor's office – search "invite the mayor" on the Council's website www.reigate-banstead.gov.uk if you would like me to attend an event. And there will be more news on the Residents Association website and E-newsletter.

Cllr Jill Bray, Mayor of Reigate & Banstead

WHAT'S IN A NAME? HUBERT DE BURGH?

For those who live or just pass through the new London Square housing development on the old **De Burgh** school site, here are a few facts about some of the road names.

Geographically it is strange to have a **Dover** or **Devizes** name in this leafy corner of Surrey. Eight hundred and fifty years ago Hubert de Burgh was born in Burgh next Aylsham, Norfolk, in a family of minor gentry. Through patronage, opportunity and above all steadfast loyalty to King John he became the leading Councillor and Regent to his son and successor, Henry III.

Here is a brief outline of his life, so fasten your seat belts

Hubert's career started when he was accepted into the service of Richard the Lion Heart's younger brother, the future King John. He was made John's chamberlain and when John ascended the throne in 1199 he became an emissary and military commander, holding the castle and town of Chalons in France against daunting odds for two years. It was a further two years before he could be ransomed and returned home.

He rebuilt his career at John's court and married **Beatrice** de Warenne, daughter of the Earl of Surrey.

When King John sealed the Magna Carta with the rebel barons in 1215 at Runnymede, Hubert was one of the witnesses. Hubert was propelled onto the world stage as the agreed choice for Chief Justiciar, a compromise candidate between John and the barons. In this role he was a combination of Chancellor of the Exchequer and Lord Chief Justice. Civil war then erupted and Beatrice died leaving their young son to be cared for.



John sent Hubert to garrison **Dover** Castle as French forces had been called for by the rebel barons who offered the throne of England to Prince Louis, the French king's son. Hubert held Dover as French forces held London and much of the south of England, and the barons allied themselves with the invading forces. Hubert

withstood the onslaught and held this key link between England and France, even when news came through of King John's death.



Hubert was made Earl of Kent and over the next fifteen years he was the main adviser to the young King Henry until finally deposed as the king wanted a younger group of advisers. For a time he was imprisoned in **Devizes** Castle (*photo courtesy of Brian Robert Marshall*) in a period of disfavour with the young king.



For the last ten years of his life he continued to serve the young king, settling in Banstead, and extending All Saints Church. (Surprisingly, Burgh Heath was named a century before, and not after Hubert.)

He married **Isabella**, Countess of Gloucester who died on their honeymoon and later Princess Margaret, sister of the king of Scotland.

Shakespeare knew a good story line, bringing Hubert to life in his play, *King John* (*shown left*). Hubert is portrayed as a man of conscience, standing up to the "Bad King", by refusing his instruction to murder the young Arthur, a nephew to the King and a possible rival to the throne.





Welcome to the St Mark's Food Club serving Preston+Tattenhams

Interested in stretching your household budget further? Then join our community Food Club to reduce your food shopping bill helping you to save money. We are working with FareShare to distribute food that can be turned into meals and cutting down on waste

How it works

You pay £1 for a years' membership, and then £2 per weekly visit (at each visit you will have access to food valued between £10 – £14, which will include fresh vegetables and fruit subject to availability).

What you need to know

You must be a Preston or Tattenhams resident wanting to save on your household spending, this may be because you are on a low income, benefits (including state pension) or are finding yourself in temporary financial difficulties.

The club is open to you to self-refer, but you will need to speak to a staff member on your first visit to register. Your membership allows for one household member to access food once a week.

**Food will be available between 1.30pm – 3pm on Fridays at
St Mark's Church, St Mark's Rd entrance, KT18 5RD**

Any enquires or for further information please contact:

Maria Hewson Community Development Worker for Preston

Email: Maria.Hewson@reigate-banstead.gov.uk

Mobile: 07854 171376



desresblinds



**Customer service and quality
guaranteed by established family business
specialising in domestic blinds**

- rollers ■ venetians ■ verticals ■ velux
- pleated ■ conservatory roof
- awnings ■ shutters
- canopies ■ window films ■ curtains

Call us for an estimate or check out our website

tel/fax: 020 8651 3569

mobile: 07961 827 917

email: info@desresblinds.co.uk

web: www.desresblinds.co.uk

***for all your property
improvements and
maintenance....***

phone Flip !

flip bakker :

01737- 210241

07905-921-940

flip_bakker@hotmail.com

www.flipbakker.co.uk



plumbing - electrical - tiling - decorating - repairs

Advertise here!

Advertise here!

Advertise here!

Reach the residents of Tattenham & Preston - Competitive rates for local businesses

Contact Richard Mantle on 01737 - 357055

FROM SMALL JOBS TO RE-WIRES

**C
O
O
K
E
R

R
E
P
A
I
R
S**

**FULLY QUALIFIED
ELECTRICIAN**

***DON'T BE LEFT IN THE DARK
KEEP OUR NUMBER IN A
SAFE PLACE***

**J P ELECTRICAL
10 SOUTH DRIVE
BANSTEAD**

**Tel: 01737 - 355471
Mobile: 07870 - 265605
johnponsford30@btinternet.com**

GENERAL UPDATES

**F
A
U
L
T

F
I
N
D
I
N
G

&

R
E
P
A
I
R**



*Home delivery service
Small animal pet sitting
Customer loyalty cards*

*37 Tattenham Crescent
Epsom Downs KT18 5QJ
Tel: 01737 356888*

Premium Pet Foods at Sensible Prices

2021 - 2022 Committee

Chair

Kathryn Chattelle, 11 Chetwode Drive, KT18 5TL
kjchattelle@hotmail.co.uk

Vice Chair

Martin Beard, 6 Sherborne Close, KT18 5UU Tel: 01737 216655

Hon. Treasurer

Richard Mantle, 27 Shawley Way, KT18 5PB Tel: 01737 357055

Hon. Secretary

Jill Bray, 27 Shawley Way, KT18 5PB Tel: 01737 357055

Bob Harper	68 Upland Way KT18 5ST	01737 211315	Ian Mockford	1 Heathside Place KT18 5TX barassie@gmail.com	
Nick Harrison	105 Tattenham Crescent KT18 5NY	01737 215405	John Smith	16 Merland Green KT20 5JB	07767 362088
Asad Jamil	1 Oaks Way KT18 5PU	07544 939240	Mark Sparling	51 Bidhams Crescent KT20 5HE	
John Kemp	82 Upland Way KT18 5ST john@tandpr.org.uk	07941 672561			

Borough Councillors

Bob Harper 68 Upland Way e-mail: bhms.harper@gmail.com T:01737 211315
Jill Bray 27 Shawley Way e-mail: cllr.bray@reigate-banstead.gov.uk T:01737 357055

County and Borough Councillor

Nick Harrison 105 Tattenham Crescent, e-mail: nicholas.harrison@surreycc.gov.uk T:01737 215405



Epsom Downs

A local Estate Agent with
local knowledge

We are **The Local Agent**

For a free valuation call us on:

01372 253 252

sales@thelocalagent.co.uk



The **local agent**

thelocalagent.co.uk

Traditional Spanish Tapas & Cuisine

"El Rincon"

Hours of Business

Tuesday-Saturday 7.00pm-10.30pm
Tuesday-Friday 12noon-2.30pm and
7.00pm-10.30pm

Full a la carte and Tapas Menu

Special Lunch Menu

Tuesday-Thursday
Two courses £19.50 Three courses £21.50

Special Dinner Menu

Monday-Thursday
Two courses £21.50 Three courses £23.50
Friday-Saturday
Weekend Menu £30.00 for three courses

Outside patio area

We are pleased to cater for parties

For Reservations Tel: 01737 373 647
16 Highview House, Tattenham Crescent,
Epsom Downs, KT18 5QB

Contact: info@elrincon-restaurant.co.uk
www.elrincon-restaurant.co.uk